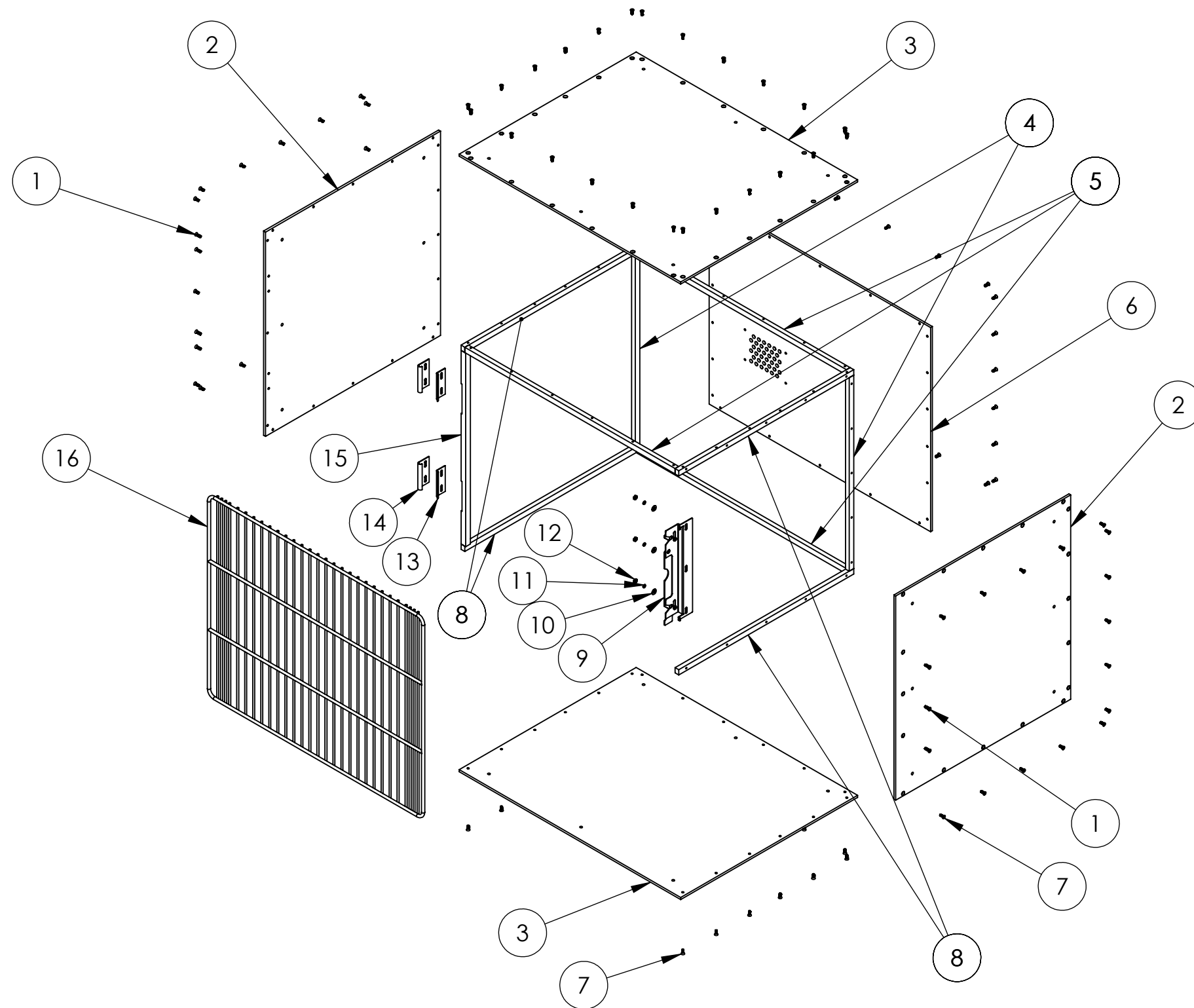


REV	DATE	DESCRIPTION	DRW	APP

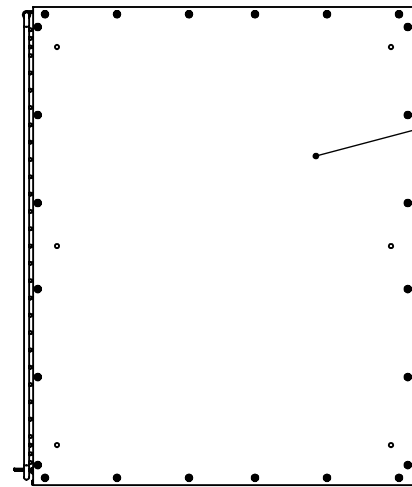


LARSON SYSTEMS INC.

10073 Baltimore St. NE PH. 763-780-2131
 Mpls., MN 55449 FAX. 763-780-2182

DRAWN DAL	Small dog and animal condo - Assembly			REV:
DATE 01/10/2011	B	DWG. NO. 025-0000-0686-04		
SCALE: NONE			SHEET 1 OF 3	

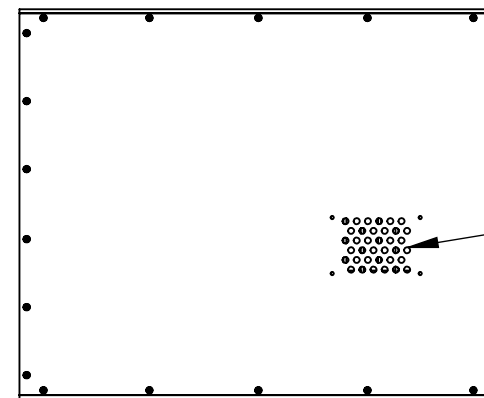
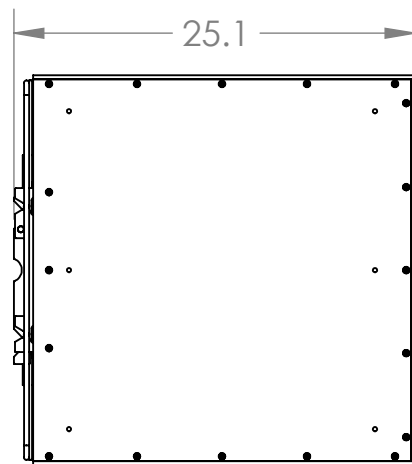
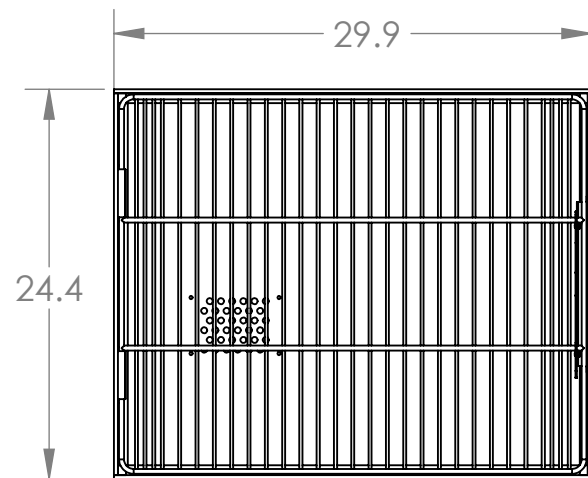
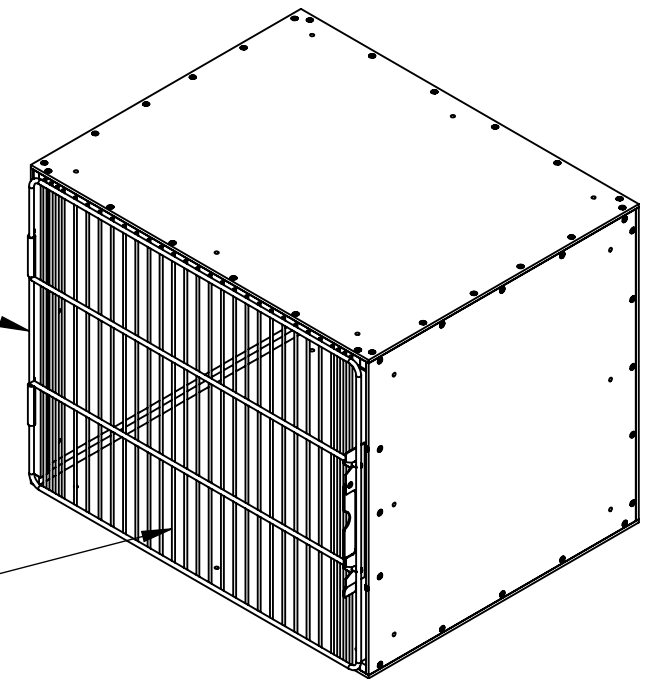
REV	DATE	DESCRIPTION	DRW	APP



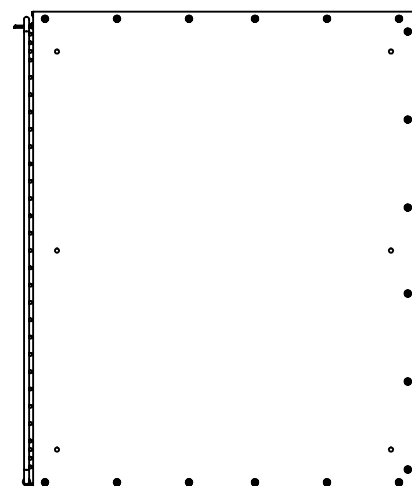
Tough easy to clean 1/4" thick HDPE plastic
wipe clean or pressure wash

Close pitch wires near the edges keep
our friends paws to themselves.

3/16" diameter wire and a 5/16 wire
steel frame is powdercoated for a
tough finish that matches your facility



Attach negative
pressure exhaust
ventilation for clean
smelling facilities



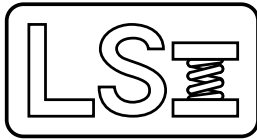
Stack cubes to
obtain best
configuration for your
facilities



LARSON SYSTEMS INC.

10073 Baltimore St. NE PH. 763-780-2131
Mpls., MN 55449 FAX. 763-780-2182

DRAWN DAL	Small dog and animal condo assembly		
DATE 01/10/2011	B	DWG. NO. 025-0000-0686-04	REV:
SCALE: NONE		SHEET 2 OF 3	



025-0000-0686-04

Parts List

Dog Condo - Assembly, 30W x 24T x 25D

Rev	By	Date	Description
	DAL	01-10-2011	

Item	Qty	Part Number	Rev	Part Name	PCB Location	Part Length
1	7	013-0000-0529-00		10-24 x 5/8 FHMS Phillips drive		in.
2	2	018-0000-2794-01	A	Cat Condo - Left / Right vertical side		in.
3	2	018-0000-2794-00		Cat Condo - Base / Top		in.
4	2	018-0000-2794-09		Cat Condo - Corner Back Support Right		in.
5	3	018-0000-2794-06		Cat Condo - Corner Top/Bottom		in.
6	1	018-0000-2794-03		Cat Condo - Back		in.
7	113	013-0000-0528-00		10-24 x 1/2 FHMS Phillips drive		in.
8	4	018-0000-2794-05	A	Cat Condo - Corner, sides		in.
9	1	025-0000-0686-02		Cat Condo - Latch Assembly		in.
10	3	013-2000-0019-00		#10 Flat WASHER - CUT IRON		in.
11	3	013-2000-0046-00		#10 LOCKWASHER Split		in.
12	3	013-0000-0085-00		10-24 Hex Nut		in.
13	2	018-0000-2794-17		Cat Condo - Hinge inner		in.
14	2	018-0000-2794-18		Cat Condo - Hinge outer		in.
15	1	018-0000-3235-00		Door hinge stiffner, cat condo		in.
16	1	018-0000-2794-14		Cat Condo - Door		in.

Approved by: 

Date: January 10, 2011

SEE ATTACHED 2 DRAWINGS